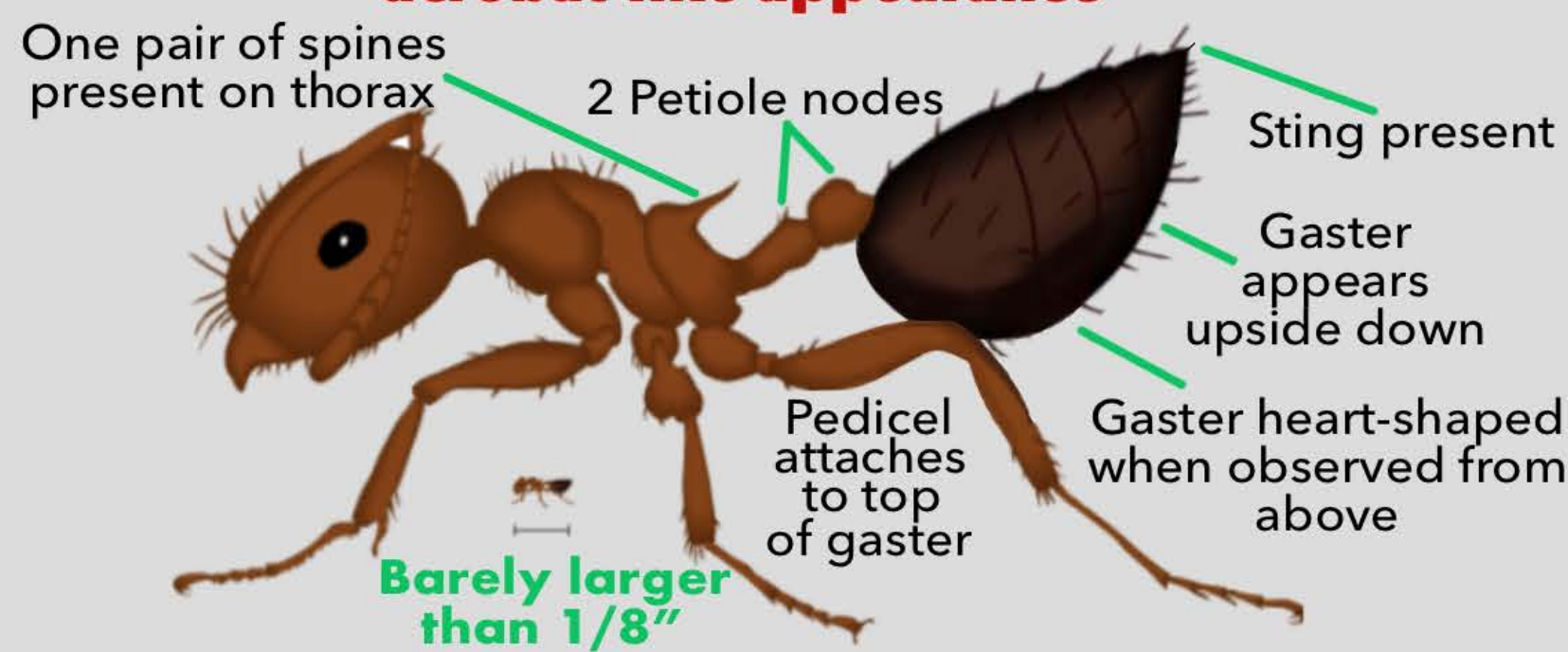


# IDENTIFYING TWO-NODE ANTS

## Acrobat Ant

*Cremastogaster lineolata*

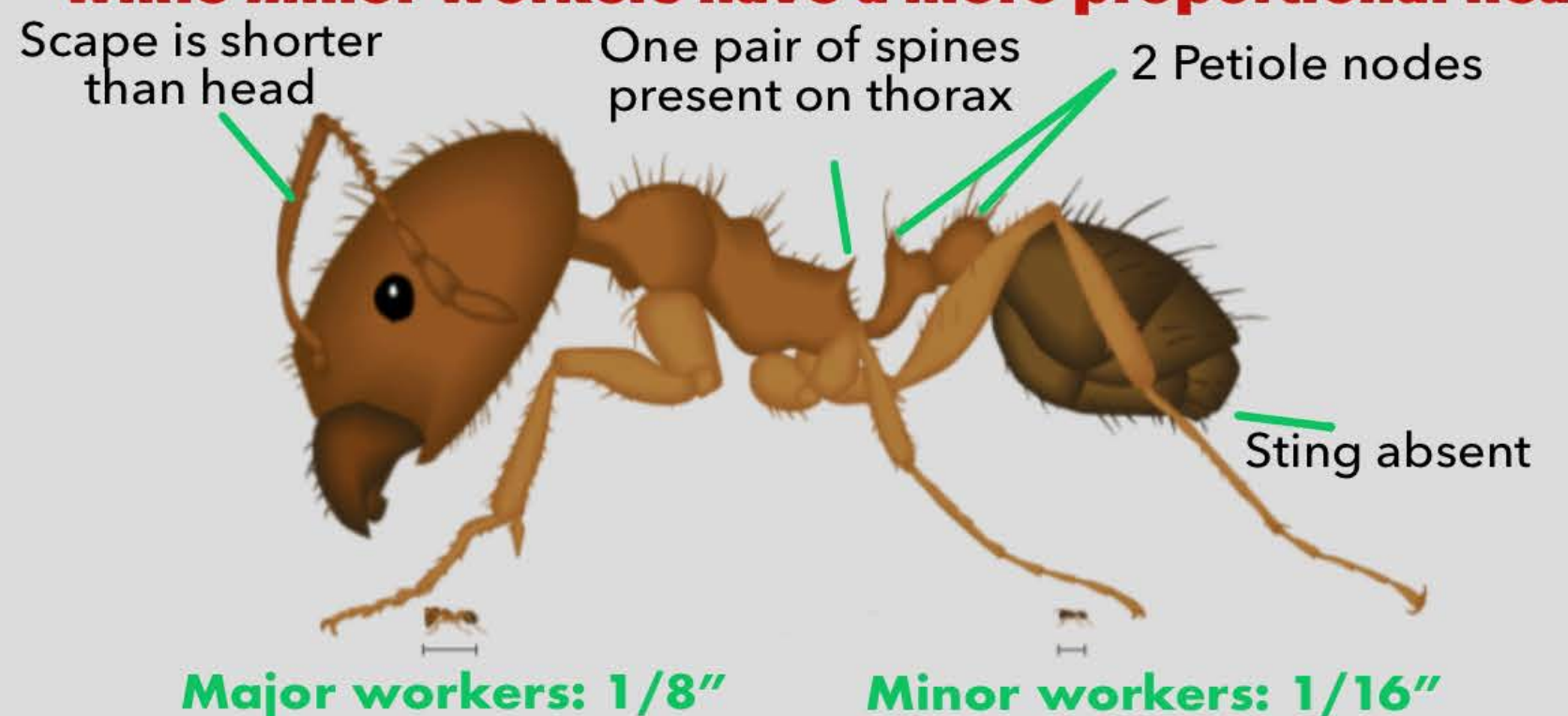
**Acrobat Ants can hold their gaster above their thorax when threatened giving them an acrobat-like appearance**



## Big-Headed Ant

*Pheidole spp.*

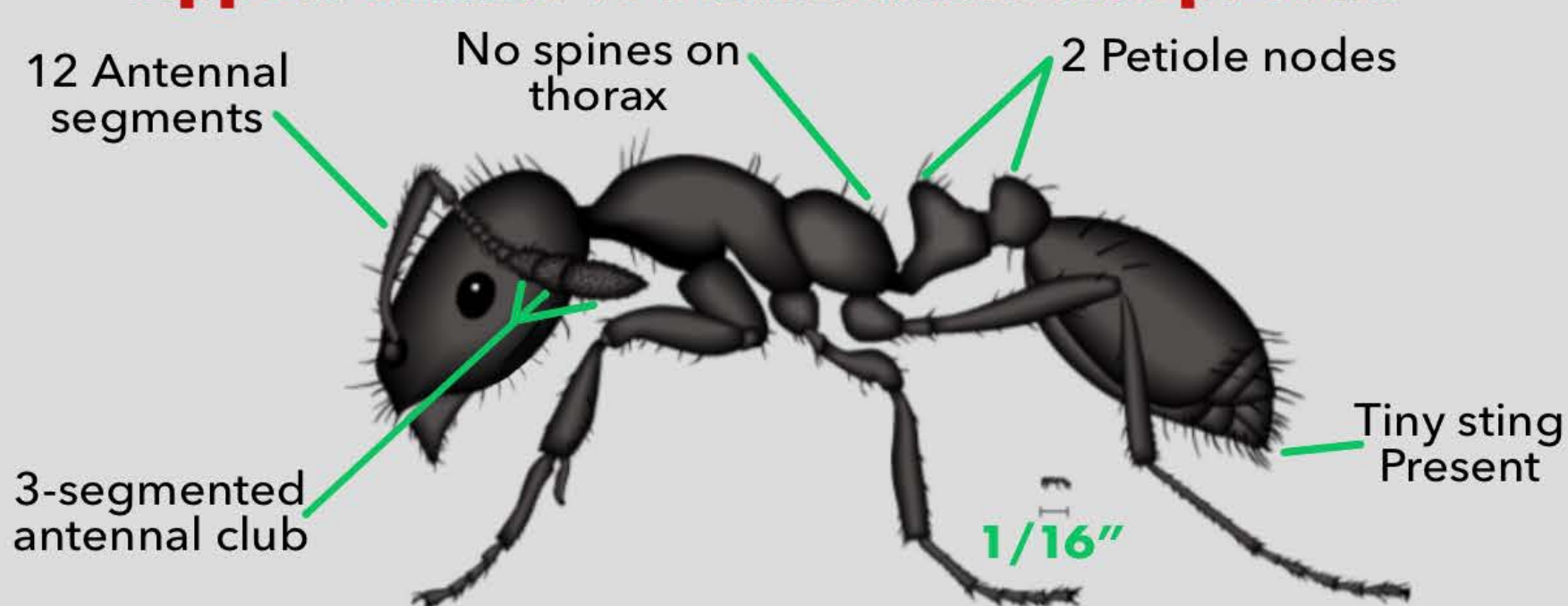
**Polymorphic. Major workers have a very large head while minor workers have a more proportional head**



## Little Black Ants

*Monomorium minimum*

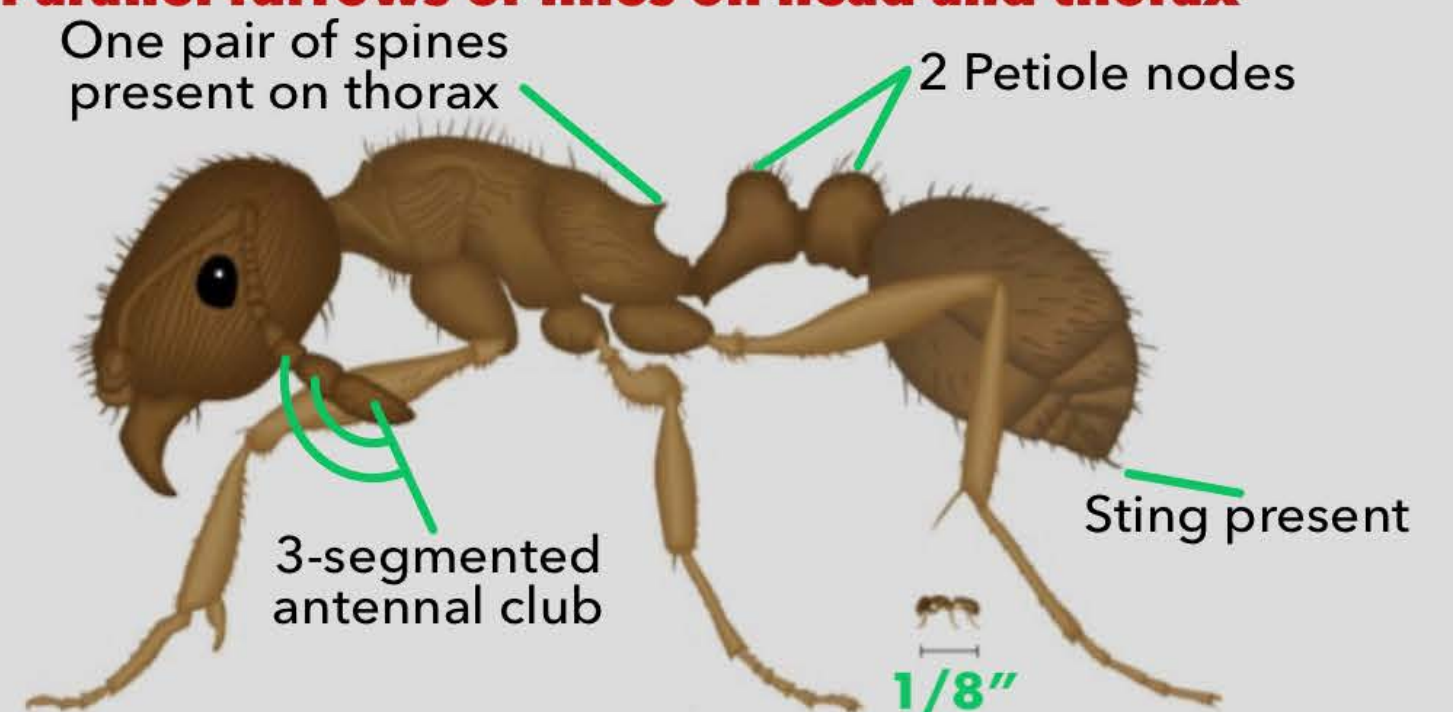
**Appear similar to Pharaoh Ant except color**



## Pavement Ant

*Tetramorium caespitum*

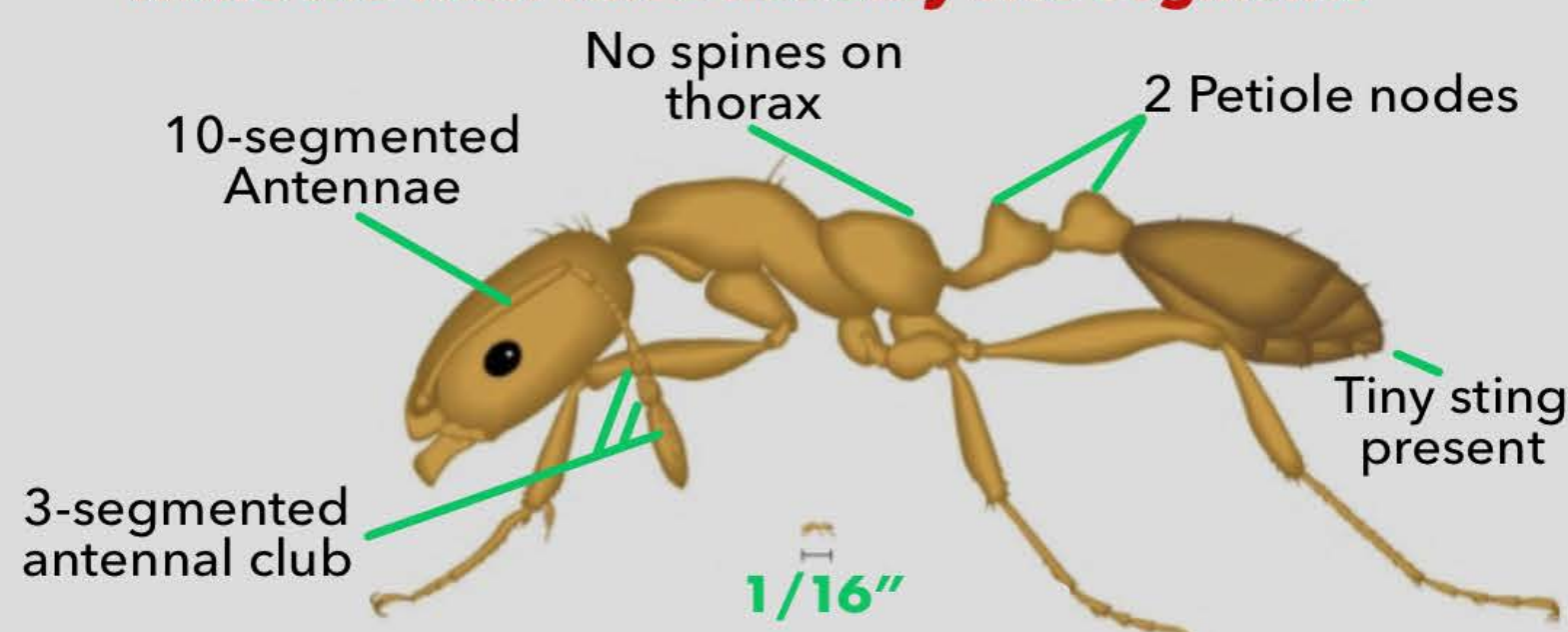
**Parallel furrows or lines on head and thorax**



## Pharaoh Ant

*Monomorium pharaonis*

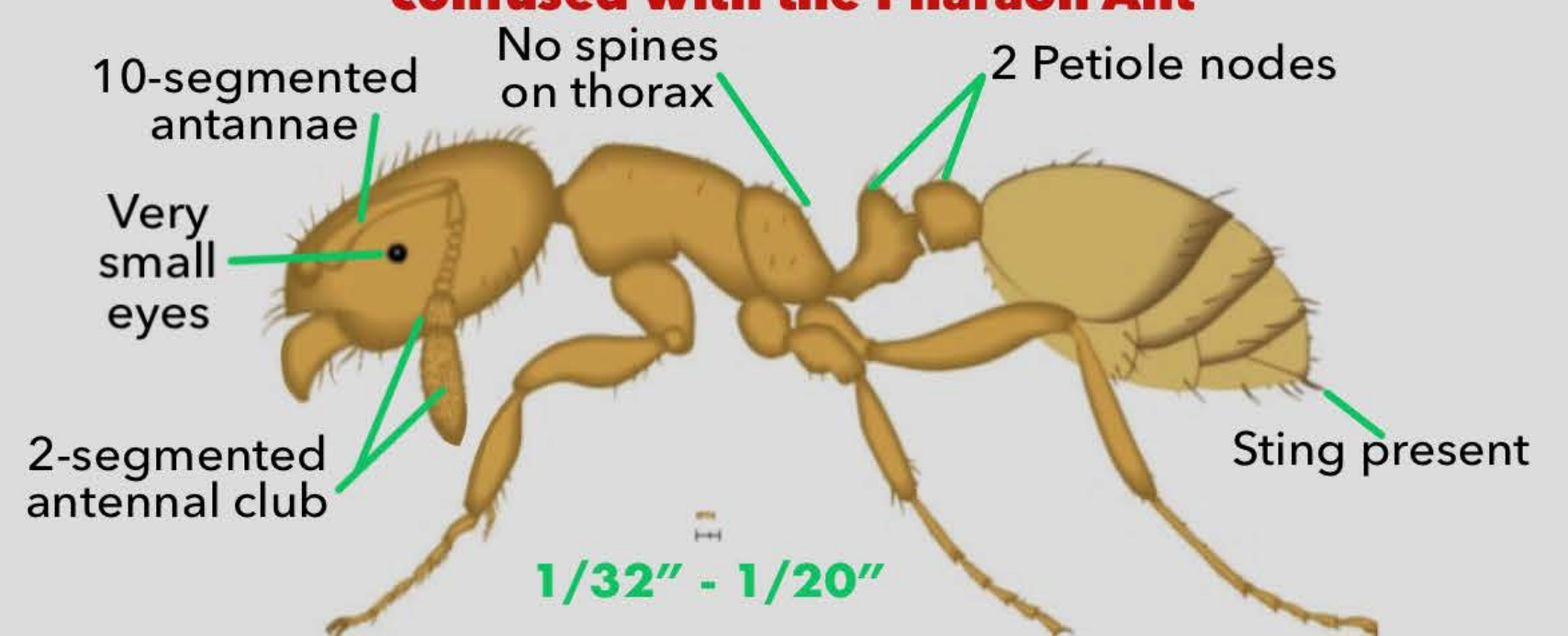
**Often confused with the Thief Ant. Primary differences: antennal club has three segments while the Thief Ant's has only two segments**



## Thief Ant

*Solenopsis molesta*

**AKA: Grease Ant. Often confused with the Pharaoh Ant**



## Black Imported Fire Ant (BIFA)

*Solenopsis richteri*

**Polymorphic**

**Workers attack when threatened and inflict painful bite and sting**

